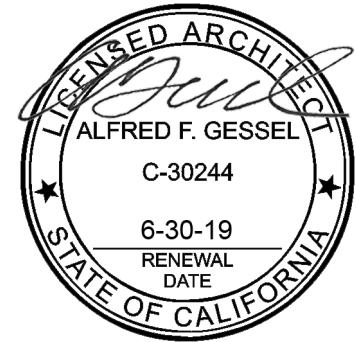


**ADDENDUM # 1**

January 22, 2018

Daniel Buchanan Elementary School HVAC Upgrades  
Murrieta Valley Unified School District  
App. # 04-115432, File # 33-32

BakerNowicki Design Studio  
731 Ninth Avenue, Suite A  
San Diego, CA 92101



---

Alfred Gessel, C30244

**PART 1 - GENERAL**

**1.1** The following revisions and/or clarifications shall be made to the Bidding Requirements and Contract Documents. Revise and amend the Documents for the above named project in accordance with this Addendum. The bid shall reflect these addendum changes and each bidder shall make reference in their bid to this addendum.

**1.2** All Bidding Requirements and Contract Documents shall apply to this addendum as originally indicated in the applicable portions of the contract documents, unless otherwise modified by this addendum.

**PART 2- PROJECT MANUAL**

**2.1** None

**PART 3 - DRAWINGS**

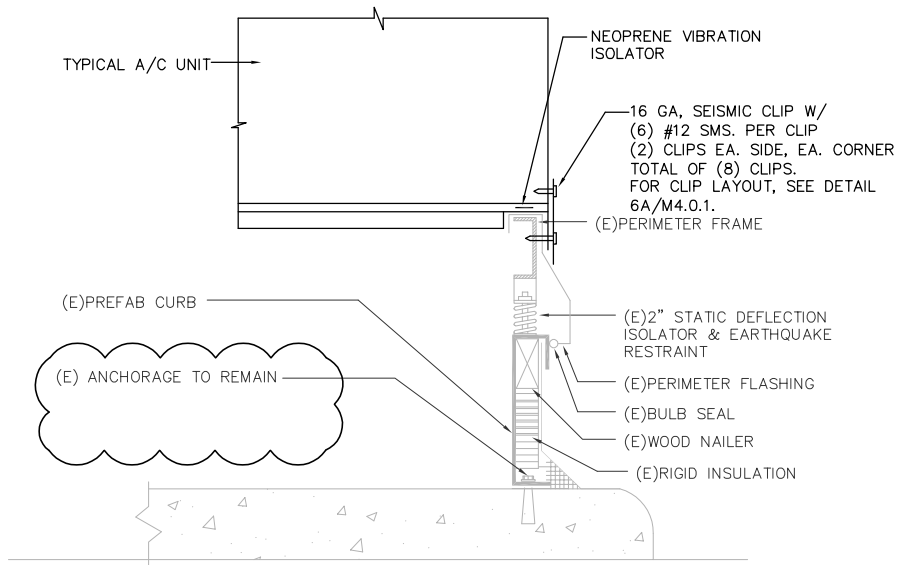
**3.1** MECHANICAL DRAWINGS ISSUED

- A.** The following Addendum ("AD") Drawings are issued:
- 1.** Drawing M4.0.1: Revise currently issued drawing per AD1-M1.
  - 2.** Drawing M4.0.1: Revise currently issued drawing per AD1-M2.

**Enclosures:**

- i.** Addendum drawings:
  - a.** AD1-M1 through AD1-M2.
- ii.** Structural Calculations:
  - a.** Structural Calculations dated January 2018

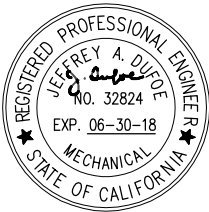
**END OF ADDENDUM # 1**



**AC UNIT MOUNTED ON (E) SLAB**

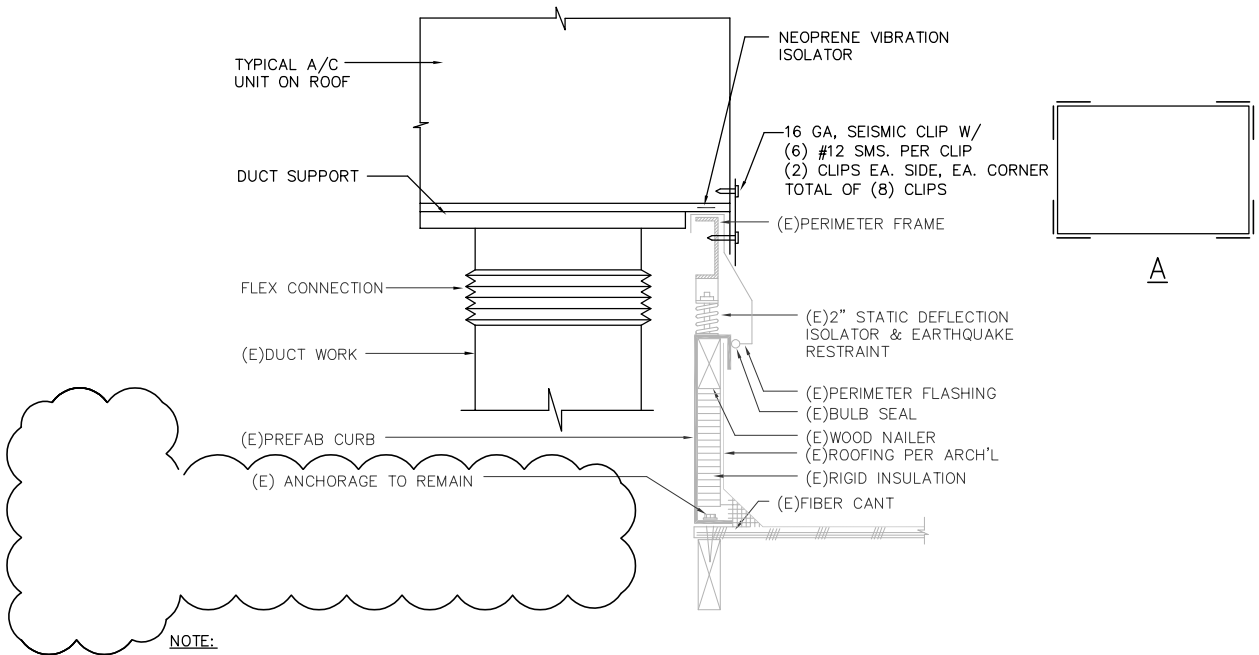
SCALE: NONE

5



6/14/2017 7:51:27 AM

TITLE: <b>DANIEL BUCHANAN ELEMENTARY SCHOOL HVAC UPGRADES MURRIETA VALLEY UNIFIED SCHOOL DISTRICT</b>		SHEET REF: M4.0.1
APPL. NO: 04-115432		DOC. REF:
FILE NO: 33-32		CONTR. REF:
<b>BakerNowicki</b> design studio		DATE: 1-18-2018
731 Ninth Ave, Suite A San Diego, California 92101		JOB NO: 15016-00
		DRAWING: AD1-M1



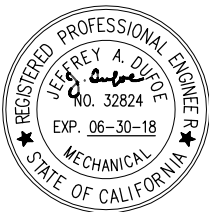
**NOTE:**

1. FILL ENTIRE VOID SPACE IN ROOF CURB WITH BATT. INSULATION.

**AC UNIT MOUNTED ON (E) ROOF CURB**

SCALE: NONE

**6**



6/14/2017 7:51:27 AM

TITLE:  
**DANIEL BUCHANAN ELEMENTARY**  
**SCHOOL HVAC UPGRADES**  
 MURRIETA VALLEY UNIFIED SCHOOL DISTRICT

APPL. NO: 04-115432 FILE NO: 33-32

SHEET REF: M4.0.1  
 DOC. REF:  
 CONTR. REF:  
 DATE: 1-18-2018  
 JOB NO: 15016-00  
 DRAWING: AD1-M2

**BakerNowicki**  
 design studio  
 731 Ninth Ave, Suite A  
 San Diego, California 92101

**STRUCTURAL CALCULATIONS**

**FOR**

**Buchanan Elementary School  
Murrieta Valley Unified School District**

**ADDENDUM 1**

**Murrieta, CA**

**KNA No. 323.036**

**January 2018**

**Prepared Under the Direction of:**



---

**Larry R. Kaprielian**

**Registered Structural Engineer, S.E. 2795 (CA)**



9931 Muirlands Blvd., Irvine, CA 92618  
Tel (949) 462-3200 • Fax (949) 462-3201  
[www.KNAstructural.com](http://www.KNAstructural.com)

PROJECT BUCHANAN ELEMENTARY SCHOOL  
ADDENDUM  
CLIENT BNDS

SHEET \_\_\_\_\_ OF \_\_\_\_\_  
JOB NO 323.036  
DATE 01/18  
BY AC

CHANGES TO DETAIL 6/M4.0.1 (A#04-115432)

THE FOLLOWING CHANGES WERE MADE TO DETAIL 6/M4.0.1:

- CALLOUT FOR (E) ANCHORAGE FROM (E) ROOF CURB TO (E) ROOF FRAMING WAS CHANGED TO READ: "(E) ANCHORAGE TO REMAIN".
- SKETCH SHOWING LAG SCREW PLACEMENT AROUND (E) ROOF CURB WAS REMOVED.

THE REASON BEHIND MAKING THE CHANGES WERE THAT THESE NEW UNITS BEING INSTALLED WERE LIGHTER THAN THE OLDER UNITS. AS SEEN IN THE TABLE ON THE FOLLOWING PAGE PROVIDED BY THE MECHANICAL ENGINEER FOR THIS PROJECT, ALL THE UNITS BEING PLACED AT BUCHANAN E.S. ARE LIGHTER THAN PREVIOUS UNITS. AS SUCH, THE (E) ANCHORAGE DOES NOT NEED TO BE REMOVED AND IS ADEQUATE.

CLIENT NO. \_\_\_\_\_

REVIEWED BY \_\_\_\_\_

DATE \_\_\_\_\_

BUCHANAN  
ELEMENTARY  
SCHOOL

2016-003 Cole Canyon Elementary School (AC-1 to 30)											
2016-004 Daniel Buchanan Elementary School (AC-1 to 30)											
Mark	Bldg	Tonnage (E)	(E) Installed Carrier unit Model	existing isolation curb weight lbs	existing scheduled Trane unit weight	new Carrier unit weight	new adaptor weight lbs	new unit w/adaptor curb	new unit heavier than old unit		
AC-1	A	5	48HJD006	340	840	670	n/a	n/a	0.80		
AC-2	A	6	48HJD007	350	895	750	n/a	n/a	0.84		
AC-3	A	10	48HJD012	375	1800	1230	n/a	n/a	0.68		
AC-4	A	6	48HJD007	350	895	750	n/a	n/a	0.84		
AC-5	B	12.5	48HJD014	n/a	1835	1640	n/a	n/a	0.89		
AC-6	B	12.5	48HJD014	n/a	1835	1640	n/a	n/a	0.89		
AC-7	B	10	48HJD012	375	1800	1230	n/a	n/a	0.68		
AC-8 to 15	C	4	48HJD005	340	800	660	n/a	n/a	0.83		
AC-16 to 18	D	4	48HJD006	340	800	660	n/a	n/a	0.83		
AC-19 to 30	E	4	48HJD007	340	800	660	n/a	n/a	0.83		

\* LIGHTER UNITS, THEREFORE EXISTING ANCHORAGE ADEQUATE.

2016-005 Monte Vista Elementary School (AC-1 to 22)											
Mark	Bldg	Tonnage (E)	(E) Installed Carrier unit Model	existing isolation curb weight lbs	existing scheduled Trane unit weight	new Carrier unit weight	new adaptor weight lbs	new unit w/adaptor curb	new unit heavier than old unit		
AC-1	A	5	48HJD006	340	950	670	n/a	n/a	0.71		
AC-2	A	6	48HJD007	350	1000	750	n/a	n/a	0.75		
AC-3	A	10	48HJD012	375	1050	1230	n/a	n/a	1.17		
AC-4	A	6	48HJD007	350	1000	750	n/a	n/a	0.75		
AC-5	B	12.5	48HJD014	n/a	1850	1640	n/a	n/a	0.89		
AC-6	B	12.5	48HJD014	n/a	1850	1640	n/a	n/a	0.89		
AC-7	B	10	48HJD012	375	1050	1230	n/a	n/a	1.17		
AC-8 to 10	D	4	48HJD005	340	900	660	n/a	n/a	0.73		
AC-11 to 22	E	4	48HJD006	340	900	660	n/a	n/a	0.73		

CHECK (E) ROOF CAPACITY FOR:

\* HEAVIER UNIT

\* HEAVIER UNIT

\* OTHER UNITS TO BE DIRECT REPLACEMENTS, BUT LIGHTER, W/ SAME ATTACHMENT. SO NO NEED TO CHECK. NO ADAPTER CURBS.